

**“Do your best, not to be better than anyone but to be the best version of yourself”**



REPUBLIC OF RWANDA  
MINEDUC  
WESTERN PROVINCE  
RUSIZI DISTRICT  
NKOMBO SECTOR  
**G.S. SAINT PIERRE NKOMBO**

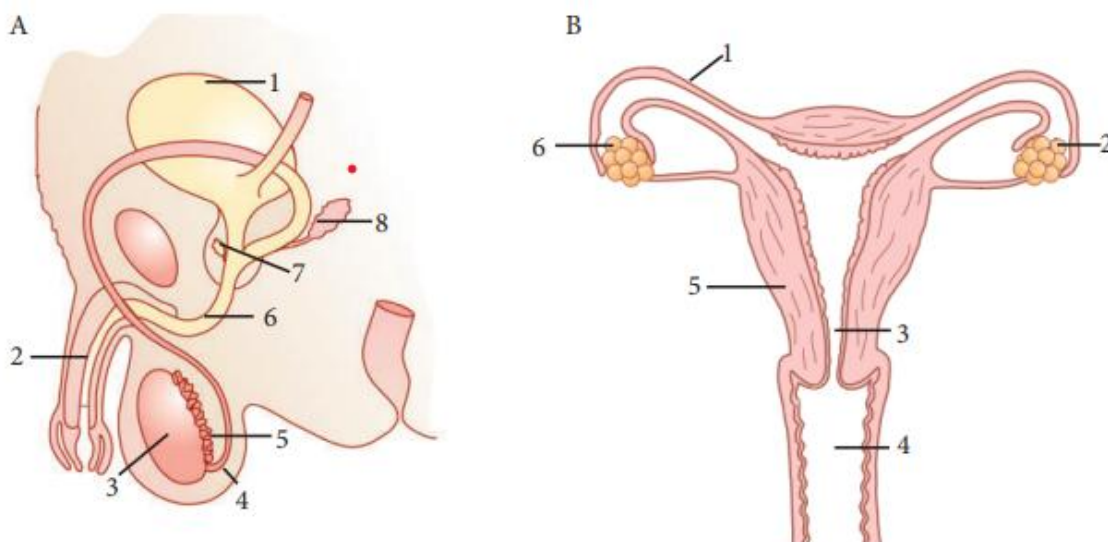
Tel: (250) 785 632 549 (Father Donath), Email: gsnkombo@gmail.com , website: gsnkombo.ac.rw



**2025**

**BIOLOGY END OF YEAR HOLIDAY PACKAGE FOR S<sub>1</sub> A&B**

**Q1.** Figure 2 shows the male and female reproductive systems. a) Identify parts 1 to 8 in diagram A. (8) b) Redraw diagram B and give labels for parts 1 to 6.



**Q2.** State two roles of the sex organs.

**Q3.** Define each of these words.

- a) intercourse
- b) implantation
- c) labor

**Q4.** State any four causes of unintended pregnancy.

**Q5.** Suggest any four antenatal care measures for a safe pregnancy and childbirth.

**Q6.** State any six signs of pregnancy in women.

**Q7. a)** What are the significances of the placenta?

**b)** Explain why pregnant women should avoid drugs and alcohol during their pregnancy

**“Do your best, not to be better than anyone but to be the best version of yourself”**

**Q8.** Explain the difference between primary sexual characteristics and secondary sexual characteristics.

**Q9.** Which hormones influence puberty in: a) boys, b) girls?

**Q10.** State two ways in which a person’s sex is indicated.

**Q11.** What is a chromosome?

**Q12.** Which two chromosomes determine a person’s gender?

**Q13.** A male sperm has a Y chromosome, and it fuses with the female ovum. Will the baby that results be a boy or a girl?

**Q14.** Explain why it is the father who determines the sex of a baby

**Happy Holidays!!!!!!**